



Vogelaar Electronics

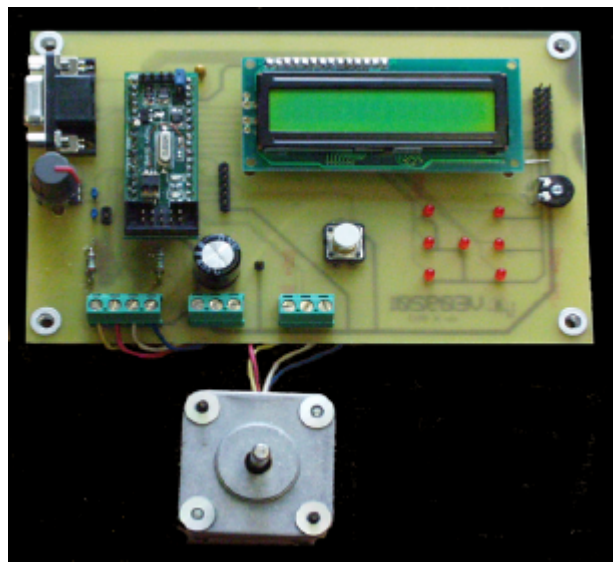
Metrology and Software

Fax. +31 (0)847 115096

e-mail: info@vogelaar-electronics.com
home page: www.metrology.nl

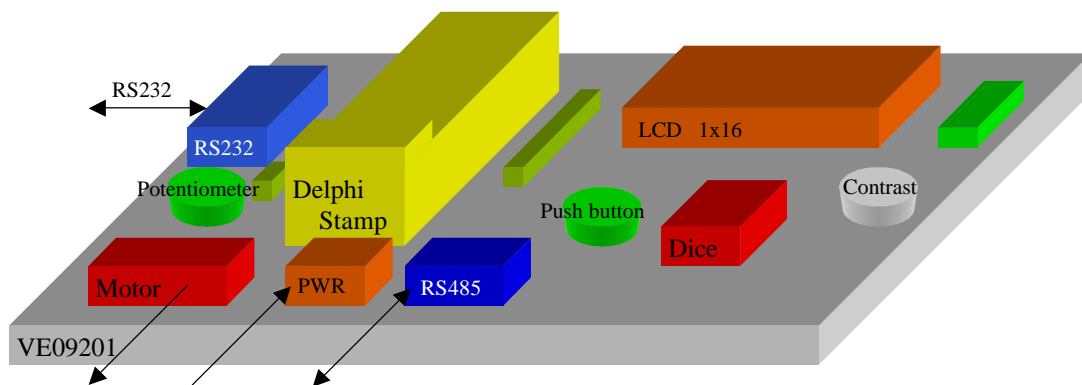
Delphi Stamp evaluation VE 09201

DS09201.doc 05-04-05



- Open PCB configuration
- Connector for Delphi Stamp
- RS232 connector for programming
- 1 line x 16 character LCD
- LED dice
- Push button – digital In
- Potentiometer – analog In
- Stepper motor interface
- Header for 2 x 20 LCD
- Expansion header with 4 I/O
- Terminal for power, motor, RS485

The VE09201 is an evaluation board for the Delphi Stamp. It provides for an easy connection to an external PV for programming, testing and debugging and for an easy connection to an external +5 Volt DC power supply.

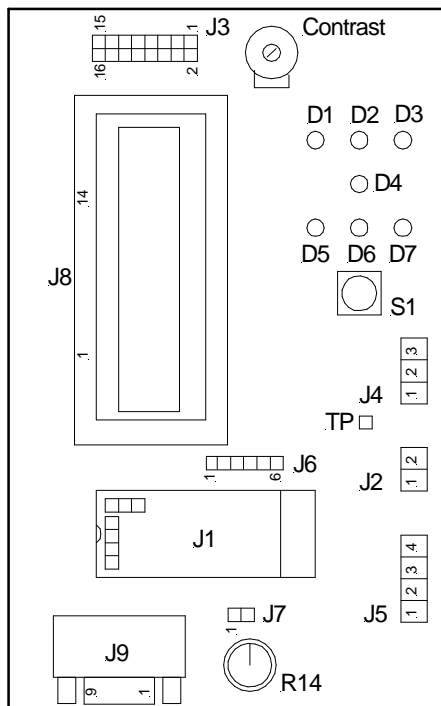


The Delphi Stamp's test program and resident drivers can control the on-board peripherals. These peripherals include a stepper motor interface, a potentiometer to feed the A/D converter, a push button to feed a digital input, a dice containing 7 LED's to observe the status of digital outputs, a LCD display and a screw terminal with an RS485 interface to control a LAN. There are on-board headers providing more digital I/O, A/D inputs and to control a larger LCD.

Specifications:

Mechanical:	
Dimensions	100 x 160 x 30 mm
Weight	130 gram
Temperature	0 .. 50 °C
Electrical:	
Power supply (1)	+5 VDC +/- 5% @ 90 mA incl. Delphi Stamp
Power supply (2)	+5 VDC +/- 5% @ 900 mA incl. Stepper motor
On-board:	
Potentiometer	A/D on PF1
Push-button	Normally High on PD0
Dice	High = Off on PB6..0
LCD	1 line x 16 character PE7..2, PF0
Stepper motor driver	Unifilar – half step – PA2..0, PF3
	4 Volt 2 x 400 mA
RS485	through MAX 487 CSA
RS232	9 pin female (2 – 3 – 5)
Headers 0.1”	
J7 Analog - in	PF2
J6 Universal I/O	PD7 PD6 PD1 PB7 Vdd Gnd
J3 External LCD	Up to 2 lines x 40 characters

Dimensions and connections:



J2 Power	
1	Gnd
2	+5 VDC

J5 Motor	
1	Wdg 1a
2	Wdg 1b
3	Wdg 2a
4	Wdg 2b

J4 RS485	
1	Gnd
2	Rx/Tx A
3	Rx/Tx B

J9 RS232	
2	Tx
3	Rx
5	Gnd

J7 Anl In	
1	Gnd
2	PF2

J6 I/O	
1	Vdd
2	PB7
3	PD1
4	PD6
5	PD7
6	Gnd

J3 Ext LCD	
1	Gnd
2	Vdd
3	Contrast
4	PE2
5	PF0
6	PE3
11	PE4
12	PE5
13	PE6
14	PE7